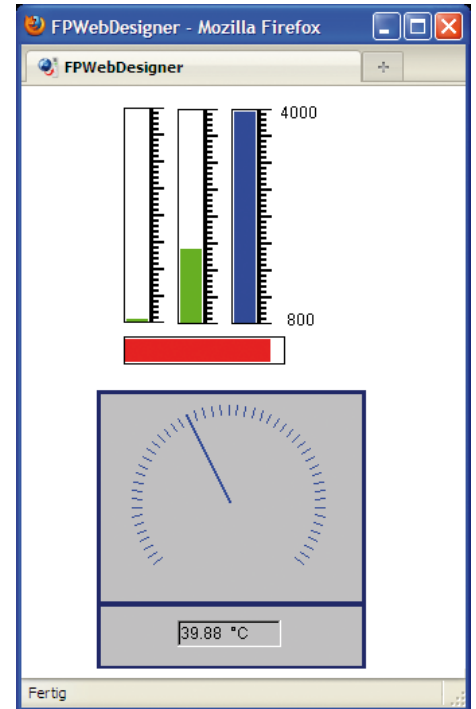
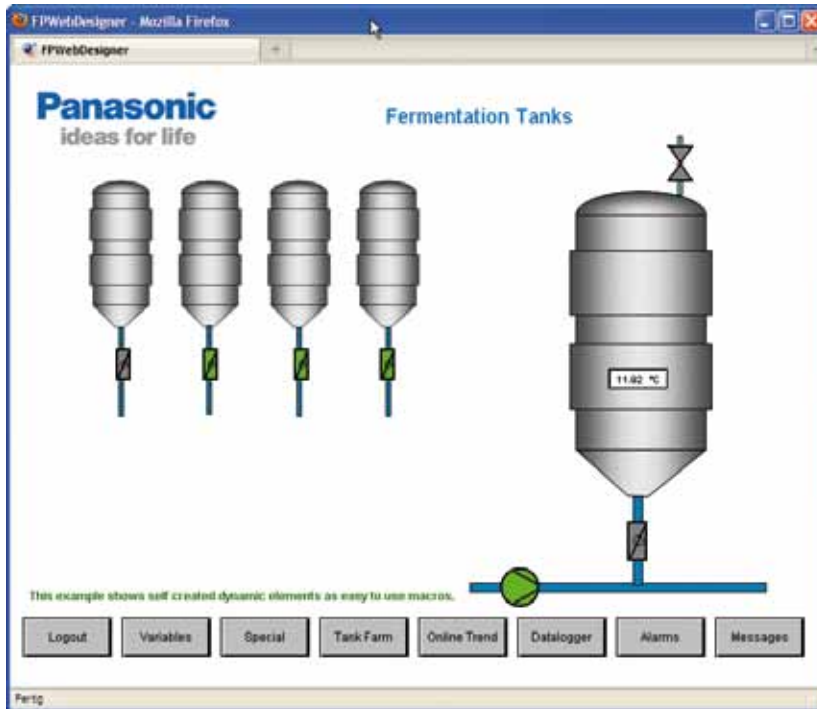


## Website editor for FPWEB2

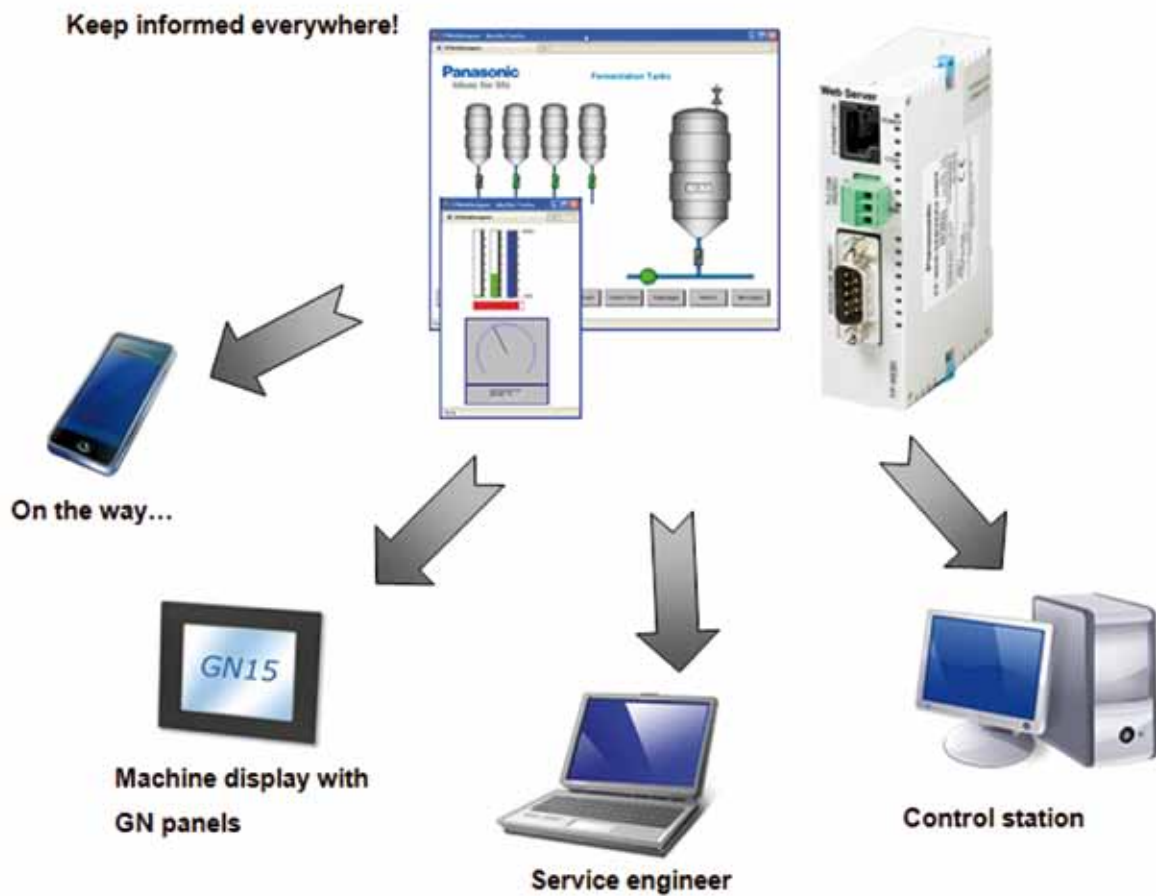
FP Web Designer is an easy-to-use editing tool for creating Websites for visualizing all process graphics and displaying process data collected by FP Web-Server. No programming knowledge for HTML, PHP, JavaScript or Java is required! Extensive graphic libraries help users with their design work.



## Features of FP Web Designer

- WYSIWYG (What you see is what you get) editor for graphic design of applications
- The designed pages can be called up by a web browser on any PC connected to LAN or WAN
- All process values are shown automatically on the screen. Each diagram can display up to 5 trend curves for measured values stored in PLCs. A simple mouse click updates the page
- The measured values together with trend curves can be stored as CSV files
- Alarm information can be visualized in web browser and saved. Updating alarm information runs in the background so that the web pages always display the current status in the browser.
- The Web pages in the browser can be password-protected to prevent unauthorized access and changes
- Process values can be imported in CSV format from PLC programs written with Control FPWIN Pro
- Extensive and expandable macro libraries available
- Online help in English and German





With the help of integrated macro functions in FP Web Designer, alarm reports and diagrams of measured values can be easily embedded into the designed graphic application.

Part number	Description	Comments
AFPS36510-E	FP Web Designer, economy edition	Limited to 250 process points, 15 views, 1 offline trend + 1 alarm
AFPS36510-B	FP Web Designer, basic edition	FP Web Designer, limited to 500 process points, 30 views, 3 offline trends + 1 alarm
AFPS36510-X	FP Web Designer, extended edition	No limitation
AFPS36510-E2B	FP Web Designer, upgrade from economy to basic edition	-
AFPS36510-B2X	FP Web Designer, upgrade from basic to extended edition	-
AFPS36510-E2X	FP Web Designer, upgrade from economy to extended edition	-
AFPS36510-E2E-UPG	FP Web Designer, upgrade from economy to economy version 6.10	-
AFPS36510-B2B-UPG	FP Web Designer, upgrade from basic to basic edition version 6.10	-
AFPS36510-X2X-UPG	FP Web Designer, upgrade from extended to extended version 6.10	-